

**'OLD PALM GROVE'**

BEING A REPLAT OF A PORTION OF BLOCK 3, REVISED PLAT OF ROYAL PALM GARDENS, PLAT BOOK 15, PAGE 44;  
 LOTS 8, 9, 10, 11 AND 25, BLOCK B, PLAT No. 3, ROYAL PALM GARDENS, PLAT BOOK 21, PAGE 57;  
 LOT 5, EASTVIEW, PLAT BOOK 23, PAGE 44;  
 A PORTION OF LOT 1, CORRECTION MAP SHOWING SUBDIVISION OF PROPERTY OF HARRY SEEMILLER SITUATED  
 IN LOTS 36, 1, 2 AND 3, SECTION 9, TOWNSHIP 46 SOUTH, RANGE 43 EAST, PALM BEACH COUNTY, FLORIDA, PLAT BOOK 9, PAGE 72;  
 LOTS 1, 2, 3, 4 AND 5, BLOCK A, AND A PORTION OF ROYAL PALM BOULEVARD  
 PLAT No. 3 ROYAL PALM GARDENS, PLAT BOOK 21, PAGE 57; LOT 18, BLOCK C, LA-HACIENDA, PLAT BOOK 15, PAGE 6;  
 A PORTION OF LOT 83 AND TRACT 'B', ESTUARY II, PLAT BOOK 93, PAGES 129 AND 130;  
 A PORTION OF TRACT 'P-2' AND A PORTION OF 6 FOOT PERIMETER SIDEWALK EASEMENT, ESTUARY, PLAT BOOK 86, PAGES 75 THROUGH 80  
 SECTION 9, TOWNSHIP 46 SOUTH, RANGE 43 EAST,  
 CITY OF DELRAY BEACH, PALM BEACH COUNTY, FLORIDA  
 JANUARY 2003  
 SHEET 3 OF 5

MATCHLINE SEE SHEET 2 OF 5

'ESTUARY I'  
 PER PLAT BOOK 93,  
 PAGES 129 AND 130

'ESTUARY II'  
 PER PLAT BOOK 86,  
 PAGES 75 THROUGH 80  
 TRACT P-2

**LEGEND:**  
 A = ARC (LENGTH OF CURVE)  
 D = CENTRAL ANGLE OF CURVE  
 R = RADIUS OF CURVE  
 ORB = OFFICIAL RECORD BOOK  
 PGS = PAGE(S)  
 LB = LICENSED BUSINESS  
 SQ. FT. = SQUARE FEET  
 \* = PERMANENT CONTROL POINT  
 □ = PERMANENT REFERENCE MONUMENT  
 PSM = PROFESSIONAL SURVEYOR AND MAPPER

WATER AND SEWER EASEMENT  
 PER PLAT BOOK 86,  
 PAGES 75 THROUGH 80

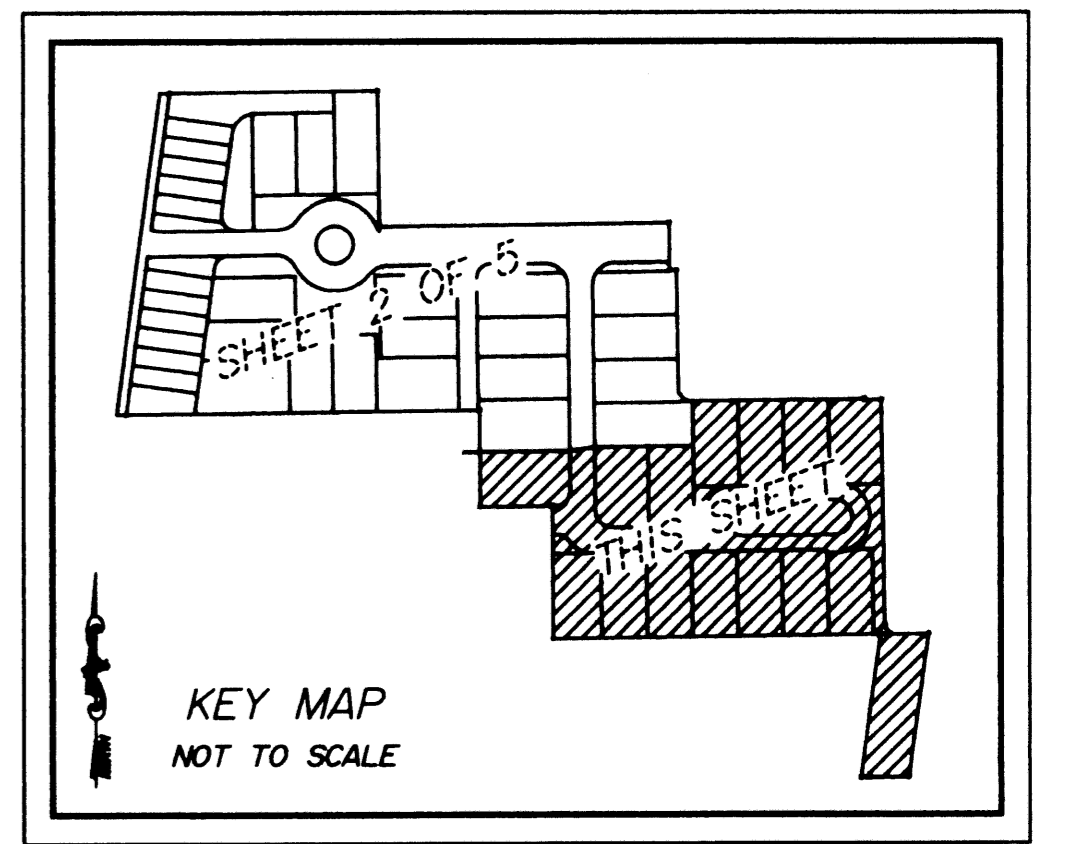
'ESTUARY II'  
 TRACT 'P-2'  
 PER PLAT BOOK 86,  
 PAGES 75 THROUGH 80

10' CROSS DRAINAGE EASEMENT  
 PER PLAT BOOK 86,  
 PAGES 75 THROUGH 80

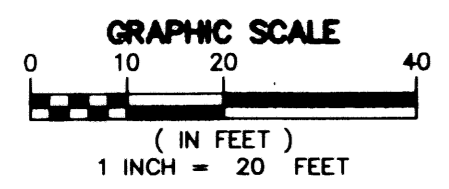
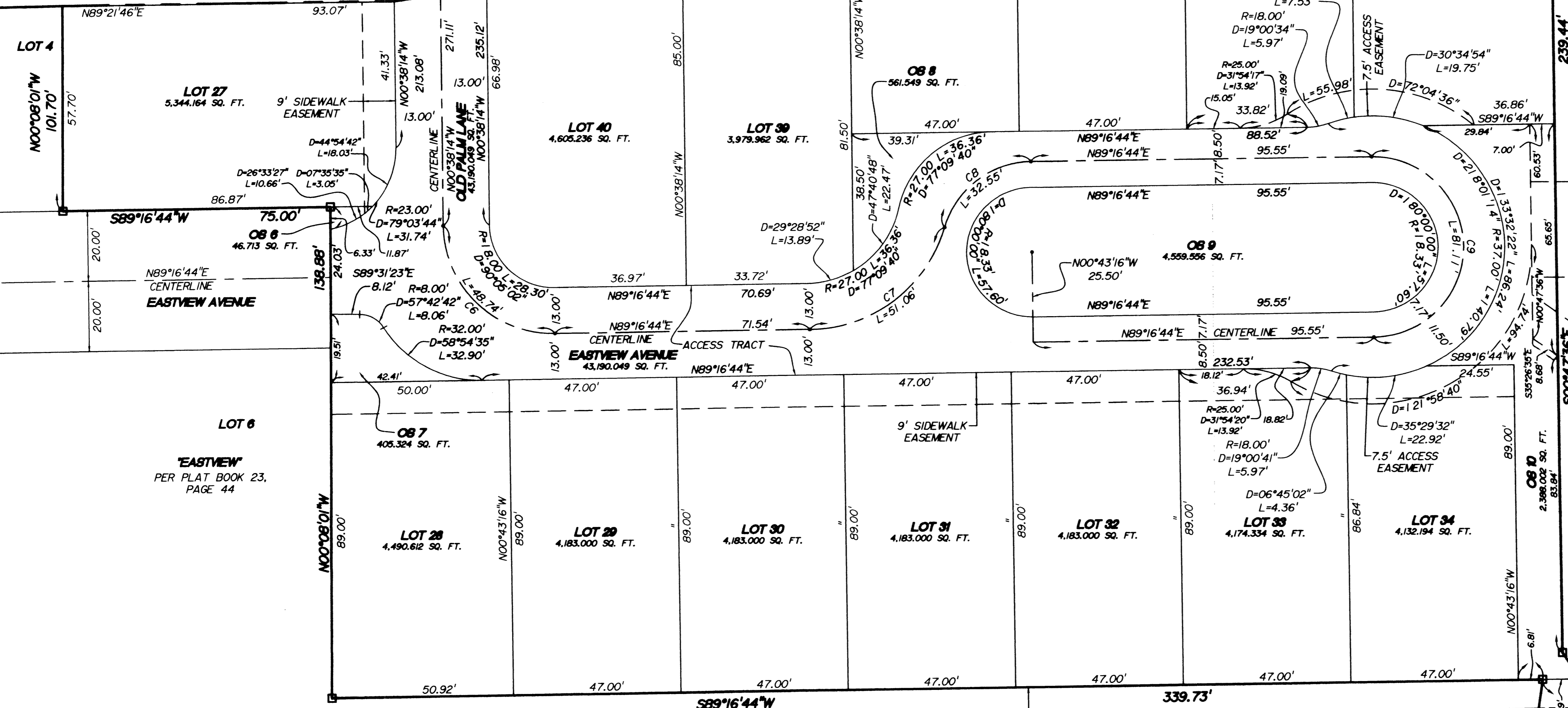
8' GENERAL UTILITY EASEMENT  
 (ABANDONED 8' PLATTED ALLEY)  
 PER ORB 12279, PAGE 324

8' GENERAL UTILITY EASEMENT  
 (8' PLATTED ALLEY TO BE  
 ABANDONED BY THIS PLAT)

\* NOTE: 8' PLATTED ALLEY SHOWN AS PART OF  
 TRACT P-1 IS OWNED BY THE CITY OF DELRAY BEACH  
 AND IS BEING ABANDONED BY THIS PLAT.



THIS INSTRUMENT WAS PREPARED BY:  
 WILLIAM D. O'CONNOR, P.S.M.  
**MILLER LEGG**  
 & ASSOCIATES, INC.  
 Engineers - Planners  
 Land Surveyors  
 Environmental Professionals  
 1300 Corporate Center Way  
 Suite 201  
 Wellington  
 Florida 33414-8593  
 (561) 798-9981  
 Fax: (561) 795-9408



CURVE TABLE					
CURVE	DELTA	LENGTH	RADIUS	CHORD BEARING	CHORD DISTANCE
C6	90°08'02"	48.74'	31.00'	S45°40'45"E	43.87'
C7	73°08'12"	51.06'	40.00'	N52°42'38"E	47.66'
C8	73°08'12"	32.55'	25.50'	N52°42'22"E	30.38'
C9	180°00'00"	80.11'	25.50'	N02°43'16"W	51.00'